



**CFE PRODUCTS**  
**JK DELUXE ACCESSORY POWER TAP**  
**MODEL # JK-APT 2011**  
**JK Wrangler 2011 & UP**



P1

**WARNING:** Before Proceeding With The Dashboard Disassembly, Disconnect And Isolate The Negative Battery And Wait Two Minutes For The Airbag System Capacitor To Discharge. Failure To Follow These Instructions May Result In Possible Serious Or Fatal Injury.

**Remove Steering Column Cover**

1. Using a trim stick or a flat edge screw driver, release the upper clips as shown in picture 1. Rotate the steering column opening cover down and remove from lower tabs as shown in picture 2.

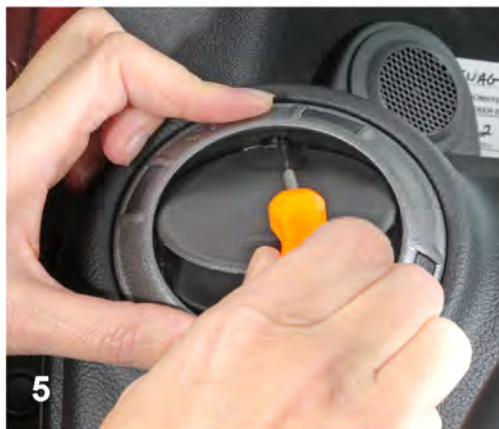
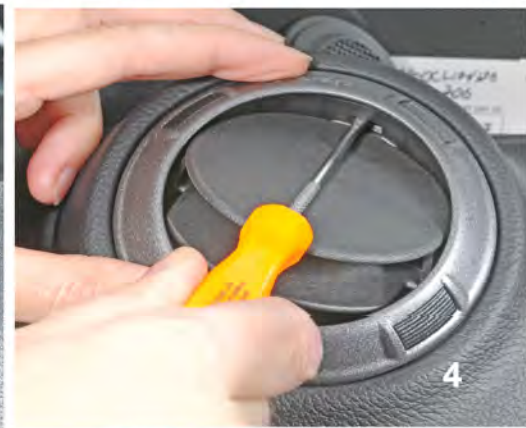
**Remove 3 Air Outlets**

(1 on drivers side & 2 below the radio) Each air outlet is secured by a retaining tab located on the outlet, and a stop tab located on the back of the trim panel.

1. Access the retaining tab from the inside of the air outlet, through the square openings provided.
2. Rotate the louvers of the air outlet in the instrument panel to the eleven-o-clock position (pic 3).
3. Adjust the louvers partly downward for best access.
4. Working from the inside of the air outlet, place a small screwdriver or equivalent through the square opening located at the one-o-clock position (pic 4).
5. Carefully pry the retaining tab toward the center of the air outlet and rotate the outlet counterclockwise until the tip of the screwdriver reaches the eleven-o-clock position as shown in picture 5.
6. Pull the air outlet straight out of the instrument panel as shown in picture 6.

**Remove 4 Dash Screws.**

1. Using a 7 mm socket remove the top screw located under the storage bin mat as shown in picture 7.
2. Unsnap the switch opening plate from below the radio. If your vehicle has power windows, unplug the wiring harness from the switch plate. Pay attention to the red locking tab on the switch plate. Use a flat head screwdriver to push it up from the bottom (pic 8)
3. Remove the plug as shown in picture 9.





**CFE PRODUCTS**  
**JK DELUXE ACCESSORY POWER TAP**  
**MODEL # JK-APT 2011**  
**JK Wrangler 2011 & UP**



P2

4. Remove the dash screw from behind the switch plate as shown in picture 10. Remove the 2 dash screws on either side of the steering wheel as shown in picture 11.

**CAUTION: Do not use tools to release the lower bezel retaining clips or damage to the bezel and reinforcement ring can occur.**

**Remove Dash Bezel**

1. Using two hands, reach through the vent openings and firmly grasp the lower bezel. Carefully pull the bezel back to release the lower retaining clips as shown in picture 12.
2. Using two hands on either side of the dash bezel, pull the dash bezel toward you from the bottom and remove the bezel as shown in picture 13.

**Remove The Cluster Bezel**

1. Using two hands at the top of the Cluster Bezel, pull back to release the clips to the Bezel as shown in picture 14.
2. Pay particular attention to the BLUE Switched Power Port. The White Plug will be unplugged now and plugged into the Accessory Power Tap later as shown in picture 15.
3. Disconnect the rest of the HVAC electrical connectors and remove the bezel as shown in picture 16.

**Remove The Glove Box**

1. Open the glove box and squeeze the two top corners together as shown in picture 17. This will allow you to slide out the stop pins.
2. Fold the glove box down and remove.

**Accessory Power Tap Installation**

1. Fish the Accessory Power Tap Harness through the dash as shown in picture 18.





CFE PRODUCTS  
JK DELUXE ACCESSORY POWER TAP  
MODEL # JK-APT 2011  
JK Wrangler 2011 & UP

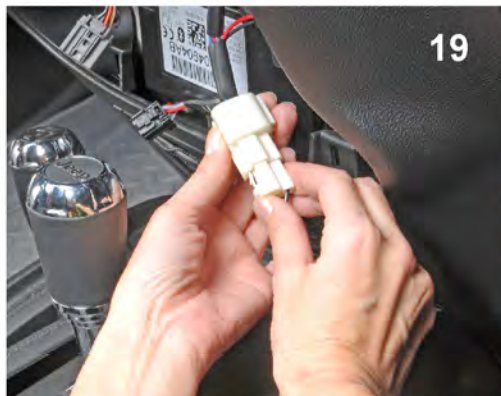


P3

2. Plug the White Power Tap Connector into the White HVAC Connector as shown in picture 19.

3. Plug the Gray Power Tap Connector into the Blue HVAC Connector (Cigarette Lighter/12 Volt Switched Power Outlet) as shown in picture 20.

4. Take the Fused End of the Power Tap and fish it through the side of the glove box compartment towards the floor as shown in picture 21.



Pull back the carpet from the Console and make your connections. Accessories are easily attached by Stripping the Accessory Wire back 1/8" and Inserting into the Power Tap. RED (+) to RED and BLACK (-) to BLACK. Neaten Up the Wires with the Tie Straps supplied and tuck the wires back under the carpet. Reassemble Dash. Now you can Add or Remove Accessories without taking the dash apart.

NOTE:

***The total amp draw should not exceed more then 7 amps.***



RED / POS +

BLACK / NEG -

