



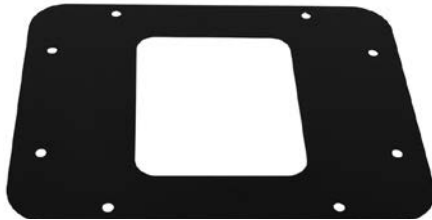
INSTALLATION INSTRUCTIONS

PART No. 80703 & 80707

**Backside License Plate Mount for Jeep®
JK Wrangler '07-'09 (80707) & '10+ (80703)**



80703 Backside Mount



80707 Backside Mount

R

10

1:

4:

W

WIRE STRIPPERS

ELECTICAL TAPE

SCREW DRIVER

STAINLESS 1/4" LOCKNUT

1/2" PLASTIC PLUG

24mm PLASTIC PLUG

BUTT SPLICE

QTY

1

1

1

4

4

2

1

4

THESE INSTRUCTIONS WERE CREATED USING A 2010+ JEEP. FOR 2007-2009 MODEL JEeps, THERE MAY BE SLIGHT DIFFERENCES WHEN REMOVING INTERIOR PANELS.

FOR OUR INSTALLATION VIDEO OR DOWNLOADABLE FULL COLOR PDF INSTRUCTIONS, PLEASE VISIT THE **TECH SUPPORT** TAB ON OUR WEBSITE AT:
WWW.KENTROLINC.COM

8070301



INSTALLATION INSTRUCTIONS

PART No. 80703 & 80707

**Backside License Plate Mount for Jeep®
JK Wrangler '07-'09 (80707) & '10+ (80703)**

1) Remove Your Spare Tire and Carrier

If your spare tire is still mounted, remove it by unbolting the lug nuts that hold it to the carrier. Carefully remove it from your Jeep.

Open your tailgate and remove the black plastic louvre by prying the left side away from the Jeep. **Do not pry on the right side. This side has small plastic tabs that are easy to break off.**

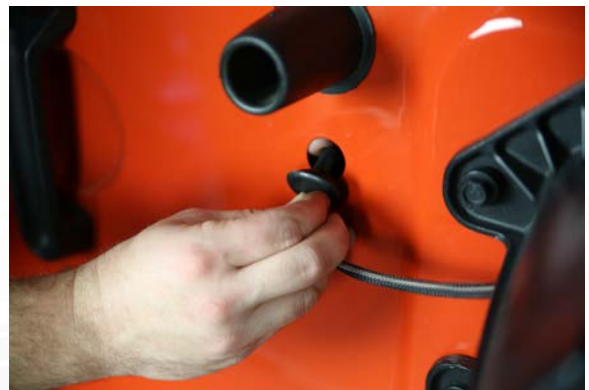
TIP: Save your fingers! Use a molding removal tool kit to make this step easier.



Reach inside the space behind the louvre you just removed and unhook the brake light connector by pressing the lock tap down with your thumb and pulling down.



Pull the third brake light wire harness through the tailgate by pushing the grommet out from the inside of the tailgate while gently pulling the harness from the outside.



Proceed with unbolting and carefully removing the spare tire carrier. **Keep your OEM hardware**, these bolts will be used for your new mount.



INSTALLATION INSTRUCTIONS

PART No. 80703 & 80707

**Backside License Plate Mount for Jeep®
JK Wrangler '07-'09 (80707) & '10+ (80703)**



the rear right side of the Jeep. This will give you access to run the wire to the passenger side tail light.

Using a T30 torx, remove the bolts from the floor of the Jeep that hold the rear plastic panel in place.

2) Remove the Interior Panels for Wiring

On the inside of the tailgate, remove the long plastic cover to expose the factory wire harness. Pull the plastic cover from the bottom to avoid breaking the small tabs on the top of the cover.



Lift your carpet and trunk cover up and away to have access to the edge of this plastic panel.



To power your license plate light, you will need to remove the plastic panel covering



INSTALLATION INSTRUCTIONS

PART No. 80703 & 80707

**Backside License Plate Mount for Jeep®
JK Wrangler '07-'09 (80707) & '10+ (80703)**



The large plastic piece shown above can be pried away from the Jeep body by pulling the edge of the panel nearest where the tailgate wire harness enters. Do not pull this piece away from the Jeep roll bar. This main piece is bolted in place on the front side of the roll bar. You will need to remove the back plastic piece shown in the next image before you can gain access to this bolt.

Carefully pry this small plastic cover, the cover for the seat belt, and the main plastic panel apart.



Once the small plastic piece has been removed, you can gain access to the 10mm nut that holds the main plastic panel in place. It is easiest to access this bolt from the backseat of the Jeep.



Once this nut is removed, you can remove the entire panel.





INSTALLATION INSTRUCTIONS

PART No. 80703 & 80707

**Backside License Plate Mount for Jeep®
JK Wrangler '07-'09 (80707) & '10+ (80703)**



3) Remove Passenger Tail Light

Your OEM tail lights are held in place by the two inner screws only. Remove the two screws with a screwdriver and remove the light housing.



Remove the light harness by pressing the lock tab down and pulling the connector apart. Set your tail light aside for reinstallation later.



4) Install Your Backside License Plate Mount

NOTE: The back plate is directional. If the bolts do not line up, flip the panel over.

Install the backside plate using the OEM hardware. Ensure "THIS SIDE UP" is in the upward position.

Install the bottom two bolts and upper right bolt first. The other holes will be used to hole the license plate mount and to route the wiring.

Install the plastic pass-through grommet in the upper left bolt hole. This will be used to route the LED wiring through.



INSTALLATION INSTRUCTIONS

PART No. 80703 & 80707

**Backside License Plate Mount for Jeep®
JK Wrangler '07-'09 (80707) & '10+ (80703)**

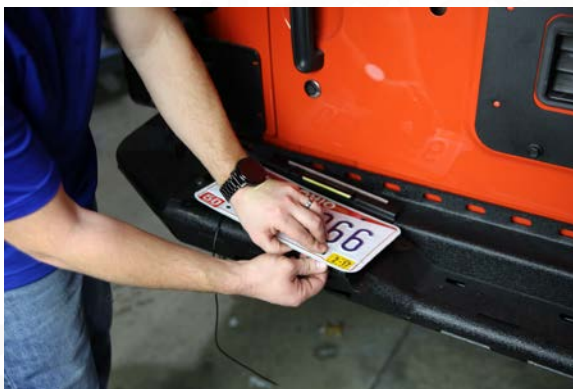


NOTE: You will have one extra OEM bolt as the wiring will be ran through the 8th bolt hole location.



Bolt your license plate to the license plate mount using a 10mm socket and 4mm hex key.

Run the LED wiring through the plastic pass-through grommet. Ensure LED wiring is not too tight or twisted after inserting.



Now attach your license plate mount to the Jeep.



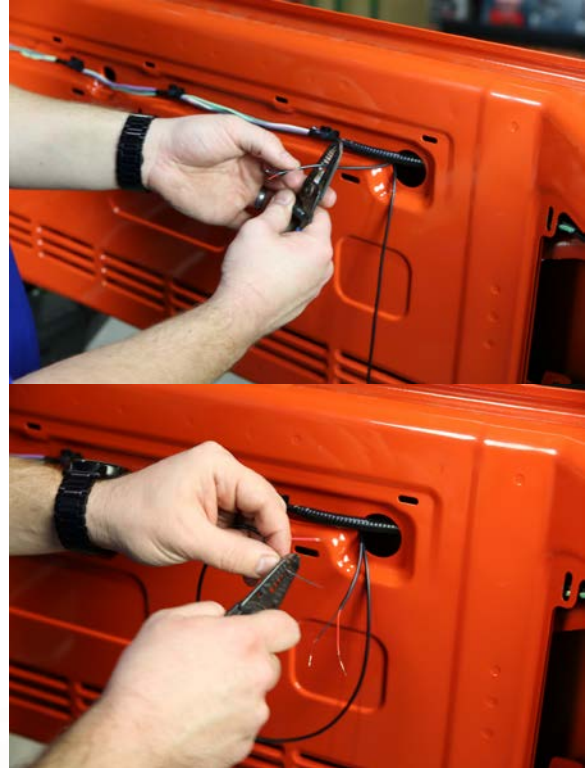
INSTALLATION INSTRUCTIONS

PART No. 80703 & 80707

**Backside License Plate Mount for Jeep®
JK Wrangler '07-'09 (80707) & '10+ (80703)**



Using your index finger, fish the wiring from inside the tailgate through the hole shown below.



On the factory harness running across the tailgate, locate the **white wire with a grey stripe**. Cut this wire, strip it back on either side and install the red wire for the brake light LED. **Double check you have the brake light LED and not the license plate light before crimping.**



5) **Wire the Brake Light**

Strip back the sleeving on both wires. Strip each black and red pair of wire back about $\frac{3}{4}$ " in length.





INSTALLATION INSTRUCTIONS

PART No. 80703 & 80707

**Backside License Plate Mount for Jeep®
JK Wrangler '07-'09 (80707) & '10+ (80703)**

Repeat this step with one of the two dark grey or black wires for the brake light LED. Both wires are ground.



Pull the tail light harness wire from the split loom. Locate the **white wire with purple stripe**. This is where the red wire from the LED will connect.



6) License Plate Light Wiring

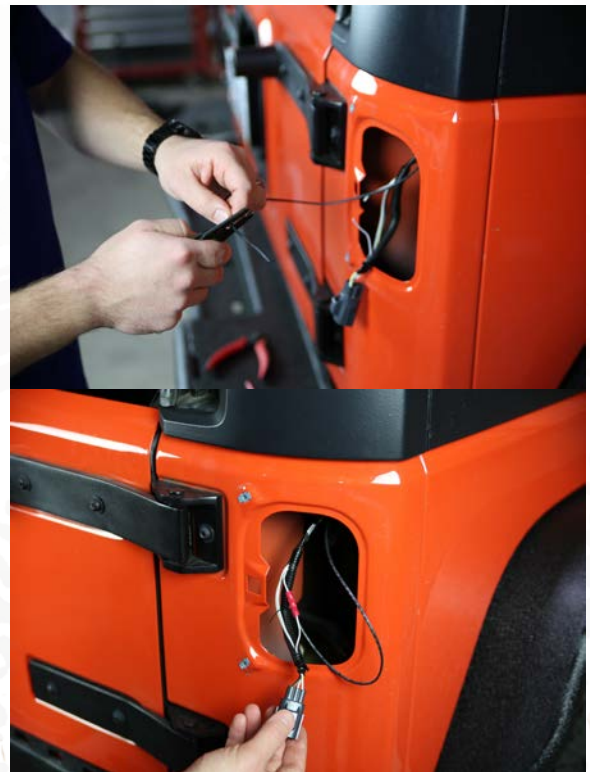
Route the LED wire along the factory harness into the Jeep. Find the rubber body grommet inside the rear quarter shown below, near the grey connector (circled).



Prep the LED wire by stripping it as before. Using the supplied butt splice, cut and connect the wires.

Push this grommet through the body and into the area behind the tail light previously removed. Remove the tape around the end of the rubber grommet to make room to run the supplied wire through the grommet.

Run the LED wire with the OEM harness and through the rubber grommet. Pull the wire out until you have room to strip the wire to crimp into the tail light harness.



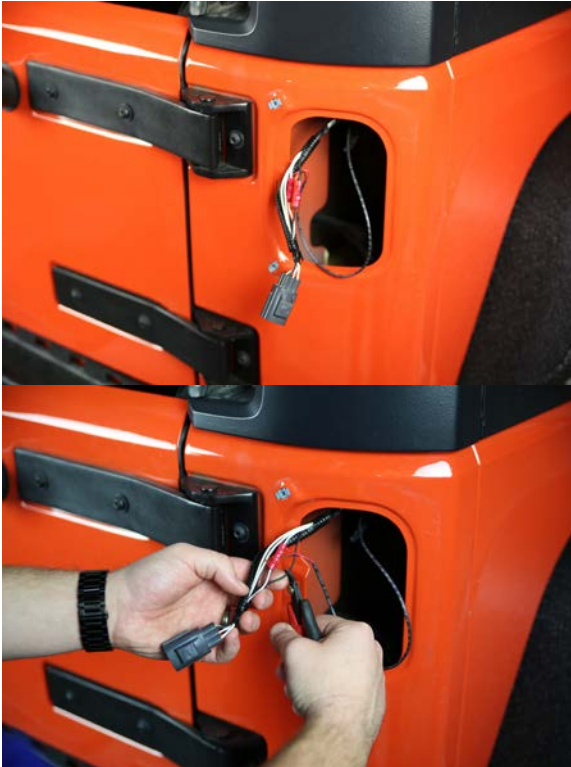


INSTALLATION INSTRUCTIONS

PART No. 80703 & 80707

**Backside License Plate Mount for Jeep®
JK Wrangler '07-'09 (80707) & '10+ (80703)**

Prep the black wire of the LED. This will connect to the black OEM wire. Cut and splice in this wire using the supplied butt splice.



Verify all connections are tight and the wire does not pull out. Reinsert the factory wire into the split loom. Using electrical tape, wrap the new wire to the OEM wire and secure it.



7) **Stop and Test**

Before reinstalling the interior panels and tail light, it is recommended to check the LEDs work properly. Turn on the Jeep's running lights and check the license plate light functions correctly. Apply the brake and ensure the brake light functions correctly, you may need a second person to help with this.

8) **Cleanup**

Reinstall the tail light in the reverse order of disassembly.



INSTALLATION INSTRUCTIONS

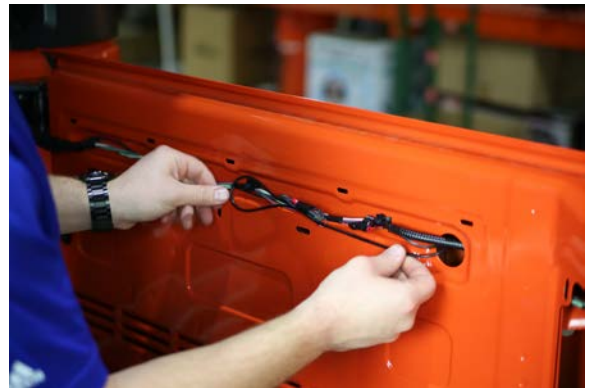
PART No. 80703 & 80707

**Backside License Plate Mount for Jeep®
JK Wrangler '07-'09 (80707) & '10+ (80703)**



Secure the new LED wiring inside the Jeep using zip ties or electrical tape.

Secure the new wiring to the OEM harness on the tailgate using electrical tape or zip ties.



Reinstall the interior body panels in the reverse order they came out. **Remember to install the 10mm nut near the roll bar.**



Reinstall the plastic panels on the tailgate.





INSTALLATION INSTRUCTIONS

PART No. 80703 & 80707

**Backside License Plate Mount for Jeep®
JK Wrangler '07-'09 (80707) & '10+ (80703)**



9) Grommets

Remove the spare tire rubber stoppers by gently pulling and twisting at the same time.



Insert the two smaller grommets into the rubber stopper holes.



Insert the larger grommet into the larger hole the OEM brake light harness ran through.



10) Congratulations!

You're Done! Enjoy your Backside License Plate Mount by KENTROL!

