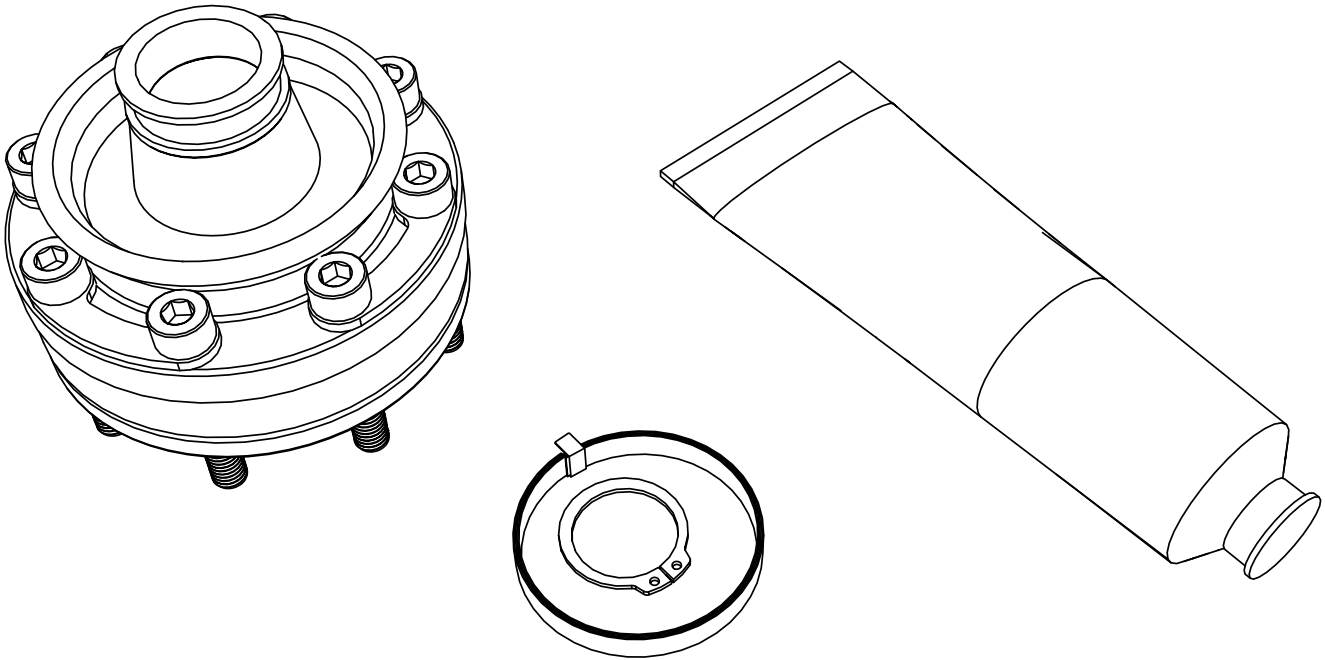




Rzeppa Factory Replacement CV Joint

www.teraflex.com

#1744014



Important Notes:

Prior to beginning this or any installation read these instructions to familiarize yourself with the required steps and evaluate if you are experienced and capable to personally perform these modifications. A factory service manual should be used in conjunction with these installation instructions.

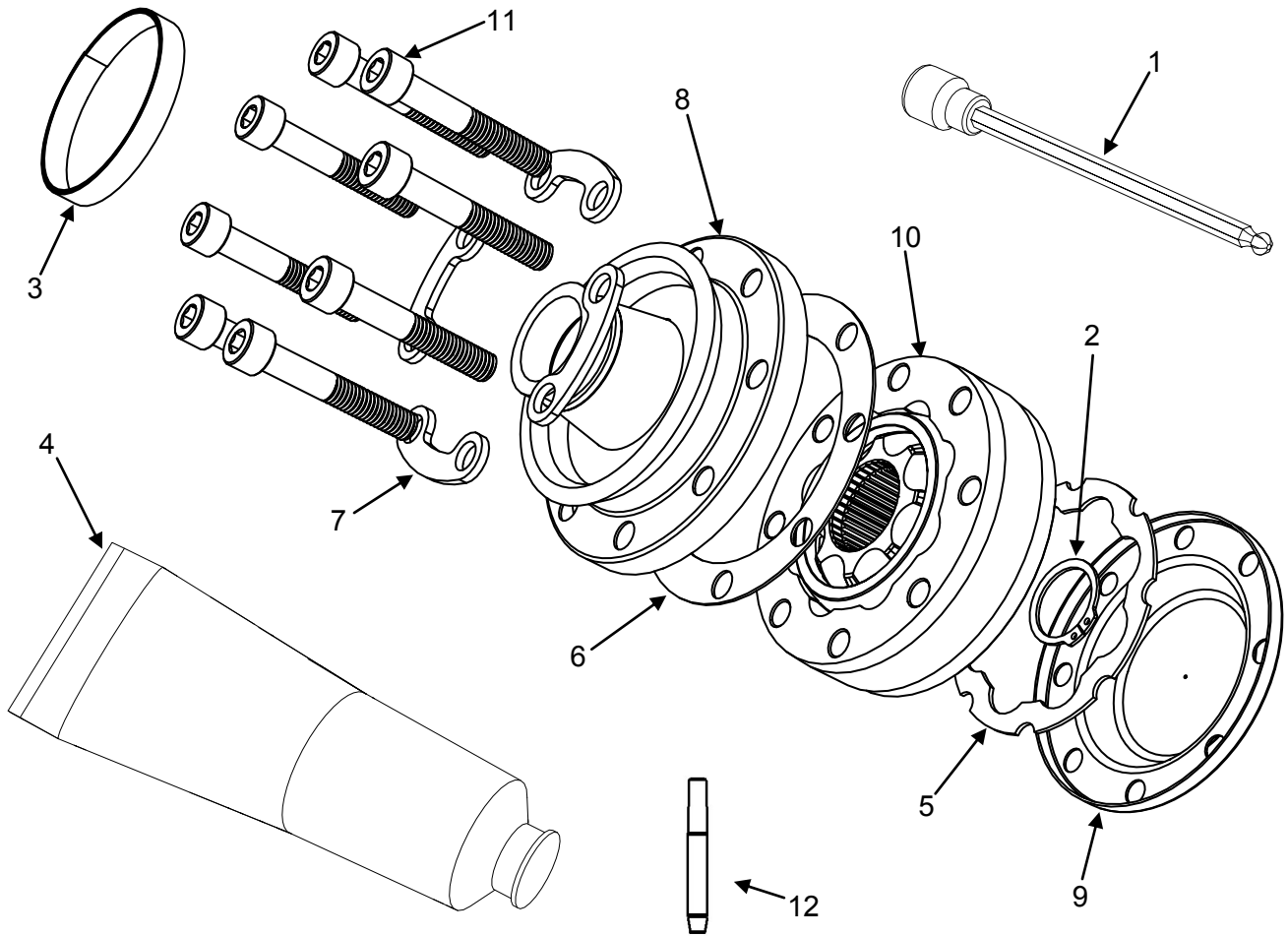
Refer to the parts list to ensure that all necessary components and hardware has been included. If any parts are missing please contact your local TeraFlex dealer for assistance.

Tools needed:

- This installation guide
- Basic mechanics tool set

Watch the
video on
YouTube!



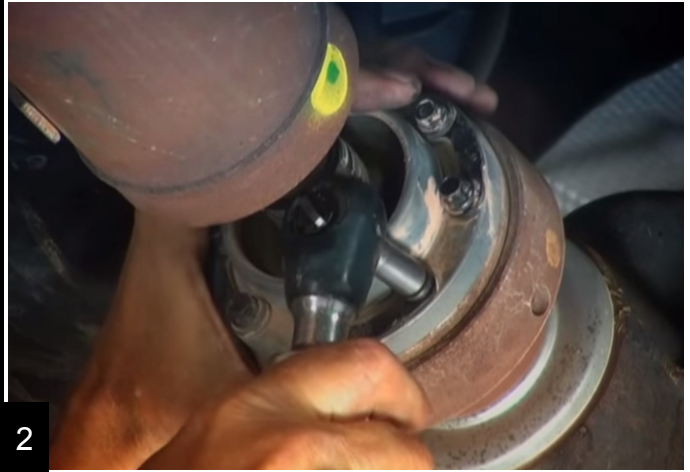


Parts List- Kit #1744014			
Item Number	Part Number	Description	Quantity
1	744008	6mm Allen Wrench	1
2	744116	Retaining Snap Ring	1
3	744115	Boot Clamp	1
4	744114	Grease Tube	1
5	744113	Cap Side Gasket	1
6	744112	Boot Side Gasket	1
7	744111	Half Moon Two Bolt Flange	4
8	744013	CV Dust Boot and Housing Assembly	1
9	744006	CV Cap	1
10	744000	CV Joint	1
11	145	Bolt M8-1.25 x 50mm Socket Head	8
12	242001	Turbo-Lock Blue Thread Locker	1

Park the vehicle on a level surface and chock the wheels that will not be raised. Place the vehicle in neutral. Raise and support the axle on which you will be doing the installation to allow for driveshaft rotation. See the factory service manual for safe support locations.

1

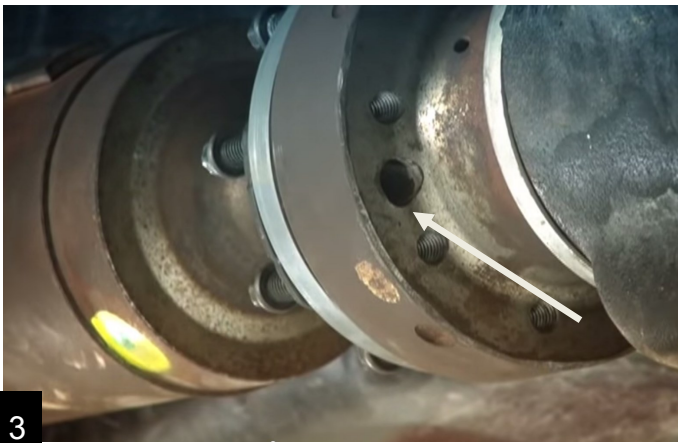
The front driveline will be removed with a 5/16" on the 8 CV bolts and a 15mm on the u-joint flange bolts.



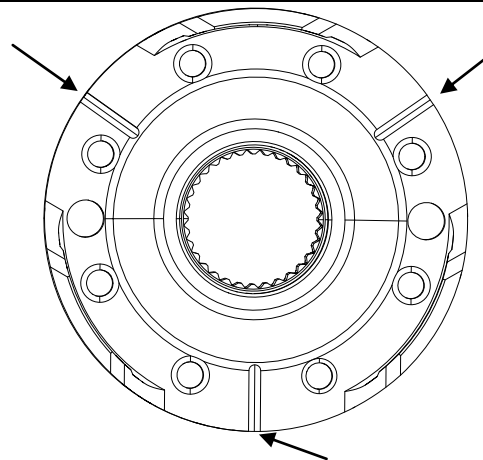
2

The rear driveline will use the same 5/16", use a punch to knock the driveline out from the axle side yoke.

Use the provided yoke indents on the t-case end of the rear driveline to free the joint.



3



4

Remove the boot clamp on the driveshaft side. Use a flat blade screw driver to pry the clamp apart.

Use a chisel or similar and tap around the edge of the inner cap to remove.

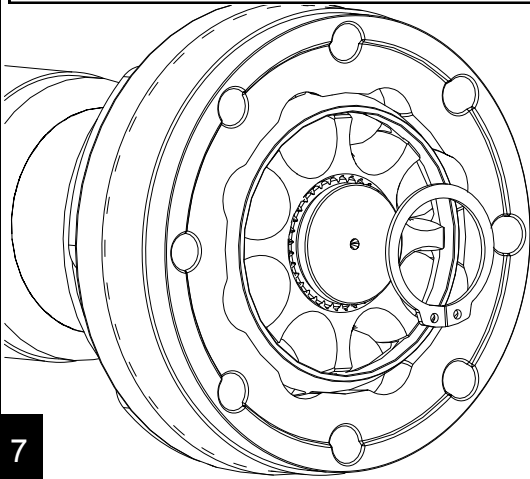


5



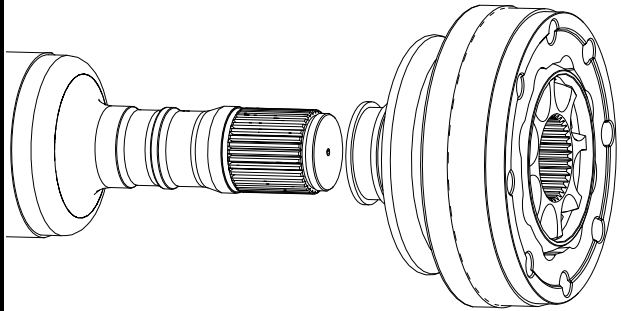
6

With snap ring pliers, remove the external snap ring on the end of the splined shaft.



7

If necessary, gently tap the drive shaft to free the joint from the splines. Normally it can be easily removed.



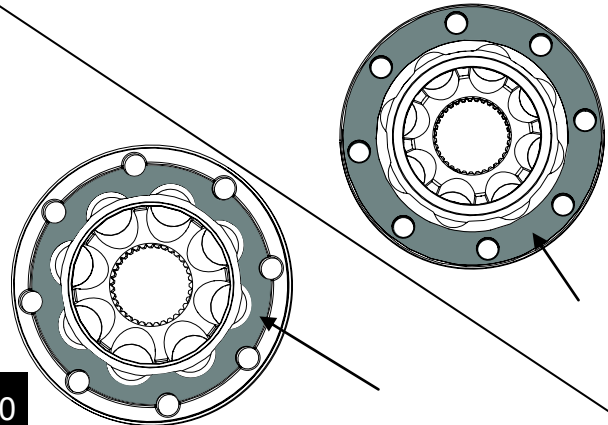
8

Using the palm method, pack the joint with the provided grease. Be sure every void is filled. See the YouTube installation video for more information on how to grease the joint!



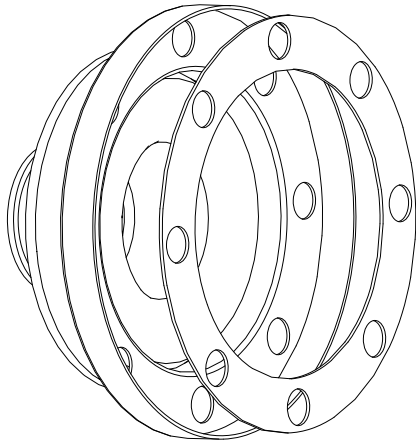
9

Use brake cleaner on a rag and clean the seal surfaces (shaded) of grease where the seals contact the joint. This is essential for a long lasting seal.



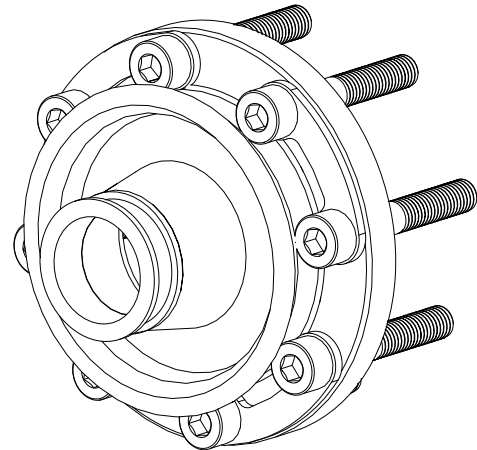
10

Install the paper seal onto the inner face of the dust boot flange.



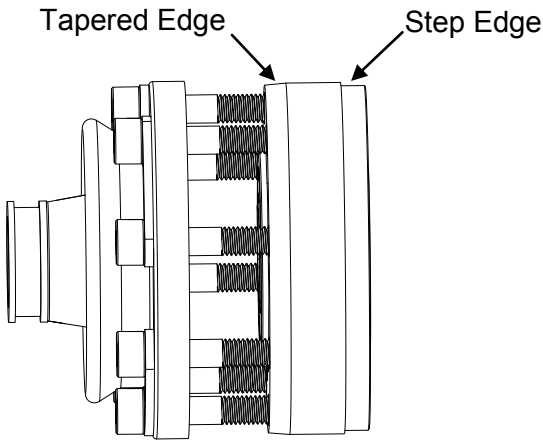
11

Insert the bolts through the dust boot flange, two at a time with the half moon washers.



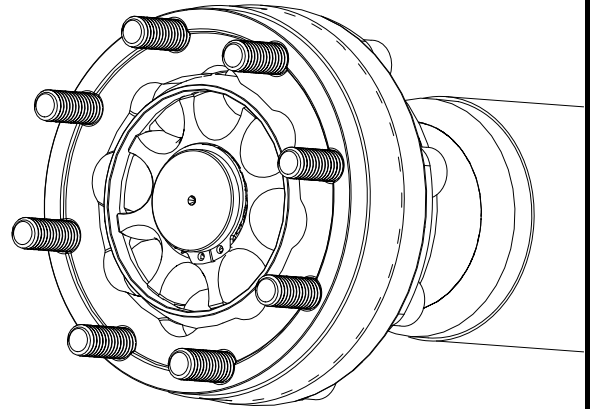
12

Install the dust boot onto the joint. Note the joint orientation.



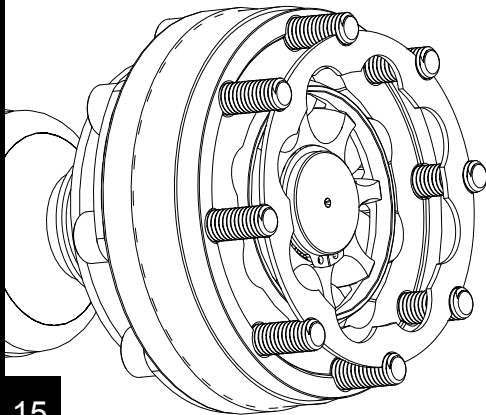
13

Slide the boot clamp over the shaft and install the joint. Install the snap ring onto the shaft.



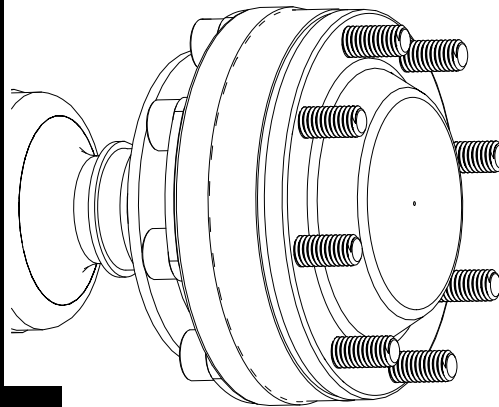
14

Align the cork gasket with the bolts and the recessed groove. Be sure the seal surface is clean of grease.



15

Apply any remaining grease onto the joint and install the cap. The cap will seat fully as you install the joint into the yoke.



16

Tightly install the boot clamp with the proper tool. It is possible to install the clamp, using a screwdriver and a pair of pliers to pull then bend the strap over the locking tabs.



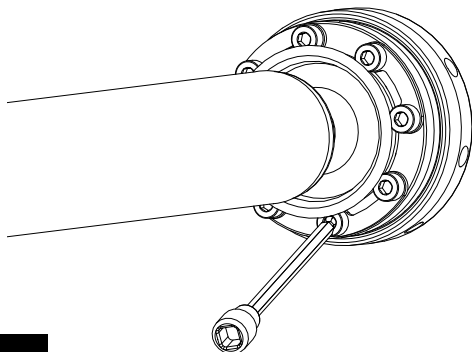
17

Once you have the clamp tight, fold the tail end over the retainers hoop. Use a punch and bend the two tabs to hold the tail down. Trim the excess tail.



18

Apply thread locker to all fasteners and reinstall the driveline.
With the new wider flange, you will need to go around the bolt circle several times threading the bolts in a little at a time to avoid damaging the flange.



19

Torque all CV flange bolts to 15 ft-lbs (20 Nm). Use thread locker and torque the front u-joint flange bolts to 81 ft-lbs (110 Nm). Remove supports and lower the vehicle to the ground.

20

PRODUCT INFORMATION

MAINTENANCE INFORMATION:

It is the buyer's responsibility to have all suspension, drivetrain, steering, and other components checked for proper tightness and torque after the first 100 miles and every 3000 miles after that.

NOTICE TO INSTALLER:

The enclosed "Warning to Driver" sticker must be installed in the vehicle in driver's view. This sticker is to act as a constant safety reminder when operating the vehicle. It is your responsibility as the equipment installer to install the provided sticker and to forward the product instructions to the vehicle's owner for review. If a "Warning to Driver" sticker or product installation guide were not included in the kit, FREE replacement stickers and instructions are available by request. It is the installer's duty to ensure a safe and controllable vehicle after the modifications have been performed.

WARNING:

Neither the seller nor the manufacturer will be liable for any loss, damage, or injury directly or indirectly arising from the use of or inability to determine the use of these products. Before using, the user shall determine the suitability of the products for its intended use, and the user shall assume all responsibility and risk in connection therewith.

WARNING TO DRIVER:

This vehicle has been modified to enhance off road performance and has unique handling characteristics. Use in harsh environments can cause extreme stress on the components. Vehicle should be inspected after being off road to make sure that all the components are in working order and safe to travel on the highway. All fasteners should be checked so that they are at the correct torque specifications as the vibration and stresses from off roading may cause critical fasteners to work loose. Extra care should be taken to inspect the critical components, steering, and brake systems. During each oil change components such as arms, tie rod ends, etc should be greased and checked for excessive wear. Any worn components should be replaced. When returning to the pavement always set or restore tire air pressure to the factory recommendation and connect or engage any disabled sway bar mechanisms. Because of the higher center of gravity and larger tires, this vehicle handles and reacts differently than many passenger cars, both on and off road. You must drive it safely! Extreme care should be taken to prevent vehicle rollover or loss of control, which can result in serious injury or death. Avoid sudden sharp turns or abrupt maneuvers. Generally, braking performance and capabilities are decreased when significantly larger/heavier tires are used, especially when used in combination with transfer case low-range reduction kits. Take this into consideration while driving. Do not add, alter or fabricate any factory or aftermarket parts to increase vehicle height over the intended height of the TeraFlex product purchased. Mixing component brand is not recommended. TeraFlex Inc. will not be responsible for any altered product or any improper installation or use of our products. We will be happy to answer any questions concerning the design, function, and correct use of our products. It is ultimately the buyer's responsibility to have all bolts/nuts checked for tightness after the first 100 miles and then every 3000 miles. Wheel alignment, steering system, suspension and drive line systems must be inspected by a qualified professional mechanic at least every 3000 miles.

TERAFLEX PRODUCT WARRANTY:

TeraFlex Inc. warrants TeraFlex Suspension products to the original retail purchaser to be free of defects in material and workmanship for as long as the original purchaser owns the vehicle on which products were originally installed.

Failure to complete regular maintenance (grease every 3000 miles) on TeraFlex FlexArms will void this warranty. All other conditions of the standard TeraFlex product warranty apply.

All TeraLow products are covered by the TeraFlex two (2) year warranty to be free of defects in material and workmanship for two years from date purchased.

TeraFlex axles are covered by a 12-month warranty to be free of defects in materials and workmanship.

This warranty does not cover or include product finish, improperly installed or applied products, improperly maintained products, products or components used for racing or competition or damage due to abuse or neglect, products that fail due to the use of larger tire and wheel combinations.

All returns must be accompanied by an original invoice. It is the customer's responsibility to remove the product from the vehicle. Shipping charges are the responsibility of the customer. TeraFlex Inc. will pay the return freight if the product meets the terms of warranty.

This warranty is for the replacement or repair of defective TeraFlex products only and does not include freight charges, labor charges for removal of or installation of TeraFlex or related products or components, costs incurred due to down time of the vehicle, or lost profits due to vehicle down time.

A returned goods authorization number (RGA#) must accompany any returned products. For more information please contact a TeraFlex customer service representative.

COPYRIGHT

©Copyright 2014. All rights reserved, TeraFlex Inc. Reproduction of this catalog and/or any of its contents without written permission is strictly prohibited.

TeraFlex® is a registered trademark of TeraFlex Inc. All trade names and logos including but not limited to TeraFlex, FlexArms, RockGuard, Monster, and LCG are protected by law and duplication of trade names and/or logos are strictly prohibited.

TeraFlex Inc. reserves the right to update, discontinue, redesign, modify finish, part number or component build parts if deemed necessary without written notice.

TeraFlex Inc., and any associated dealers are not responsible for misprints or typographical errors that may have inadvertently been made within this instruction sheet.

Jeep® and the Jeep® grill are registered trademarks of Fiat Chrysler Automobiles N.V., and have no affiliation with TeraFlex Inc.

TERAFLEX, Inc.
5680 West Dannon Way
West Jordan, Utah 84081
Phone/801.713.3314
Fax/801.713.2313
www.teraflex.com